

# capsa

ABUSE ENDS HERE.



When you support **CAPSA**  
You support **HOPE**



**FY21 ANNUAL REPORT**



Dear Supporters,

At the time of publication, COVID-19 is a significant issue facing our community and CAPSA. I am proud of CAPSA's response in building processes, implementing technology and establishing protocols to ensure critical services remain available and clients are supported.

Instead of focusing on COVID-19, you will find that **this report focuses on the services we have provided, the expansion of CAPSA's office and growth of core services including housing and future plans.**

CAPSA is laser focused on building core services to meet the needs of survivors of domestic violence and sexual abuse. Due to this growth, CAPSA has out grown our outreach offices. **This year, CAPSA will be building a 4,000+ sq. ft. addition to our outreach offices, which will include additional group spaces, program offices and support centers.**  
*Read more about the building expansion on pages 8 –9.*

For our clients, finding a safe home continues to be a major need, yet in our area, finding affordable housing is very difficult. CAPSA has addressed this barrier by building and securing dedicated homes for our clients. Last fiscal year, **CAPSA expanded the homes we own and operate from 9 to 15 and by the end of this fiscal year, we will have 21 units.**  
*Read more about CAPSA's housing program on pages 10 –13.*

Finally, we want to celebrate your support. **CAPSA cannot do this work without strong community support.** Although COVID-19 is stretching our services, we continue to meet the need, because we are confident our community will increase their support to ensure anyone escaping abuse or healing from the trauma has access to CAPSA services.

Thank you,

A handwritten signature in blue ink that reads "Jill Anderson". The signature is fluid and cursive, written over a light blue rectangular background.

Jill Anderson  
**CAPSA** | Executive Director



# A FRIEND ASKED YOU FOR HELP. WOULD YOU TURN THEM AWAY?

# NO

...neither would CAPSA.

Yet, domestic violence shelters across Utah are forced to turn-away individuals when their shelter is full.

**CAPSA is leading Utah as the first domestic violence shelter to have zero-turn-aways.**

Learn more at [www.capsa.org/zero](http://www.capsa.org/zero)

ZERO TURN-AWAY  
BUSINESSES



MALOUF  
FOUNDATION



Sofía always tried so hard for her and her daughter; however, her ex did not want to let her go... He alienated her from her family and friends, threatened her landlord and showed up to her job multiple times making scenes. This resulted in her eviction and losing her job. Sofía and her daughter were reduced to living in a storage unit, because it was the only place she could find to get away from him.

Sofía tried so hard; however, she needed help. **Sofía came to CAPSA where she found a safe place and resources to end the abuse.**

# CAPSA'S PROGRAMS



## CAPSA'S SUPPORT

CAPSA supports individuals who have experienced domestic violence, rape and/or sexual assault. Our wrap-around services help individuals and families escape abuse and heal.

 **1689**  
CLIENTS SERVED

 **9069**  
CRISIS PHONE CALLS



## EMERGENCY SHELTER

CAPSA provides a safe place for individuals and/or families escaping domestic violence, rape and/or sexual assault. Our shelter provides a refuge to begin healing. We shelter men and/or women and their accompanied children.

 **320**  
SHELTER CLIENTS

 **6748**  
CLIENT NIGHTS



## CASEWORK

CAPSA caseworkers are experts at assisting victims of domestic violence, sexual abuse, rape and stalking to become safe, secure resources, navigate legal proceedings, find housing and reach their goals.

 **980**  
CASEWORK CLIENTS

 **8895**  
THERAPY HOURS



## CAPSA SUPPORT GROUPS

CAPSA offers support, educational and therapy groups for our clients. Groups create a safe place to learn, process and heal while developing a peer-based support network.

Many of these groups have complementary children-appropriate curriculum taught by a child advocate; this allows the clients and their children to learn similar concepts and have a shared vocabulary.

# SUPPORT OUR COMMUNITY

## HOUSING PROGRAM

CAPSA offers a transitional housing program and housing assistance funding to provide a safe place for survivors to live while beginning a new life without abuse.

 **240**  
HOUSING CLIENTS

 **21**  
HOUSING FAMILIES



## CLINICAL THERAPY

CAPSA clinical therapists are trauma informed experts in treating anxiety, depression and other disorders associated with domestic violence and sexual assault. CAPSA offers free and confidential clinical therapy for adults and children.

 **492**  
THERAPY CLIENTS

 **4026**  
THERAPY HOURS



## EDUCATION & PREVENTION

CAPSA presents curriculum promoting healthy relationships, increasing protective factors and bringing awareness to CAPSA's services. Presentation are targeted to middle and high schools, businesses and community groups.

 **476**  
PRESENTATIONS

 **11,996**  
STUDENTS/PARTICIPANTS



## CAPSA ONGOING SUPPORT AND THERAPY GROUPS

DOMESTIC VIOLENCE  
SUPPORT GROUP

SEXUAL ASSAULT  
THERAPY GROUP

DV SUPPORT GROUP  
(RICH COUNTY)

SPANISH SUPPORT  
GROUP

HOUSING  
WORKGROUP

IN TOUCH WITH  
TEENS GROUP

BRAINWISE  
FOR PARENTS

BRAINWISE  
FOR KIDS

JAIL SUPPORT  
GROUPS

Last year, CAPSA held 201 sessions with 445 participants.



## CAPSA LEADING SYSTEM-BASED CHANGE

The Blueprint for Safety project partners CAPSA with the criminal justice system including prosecution, law enforcement and system-based advocates to improve responses to domestic violence cases.

CAPSA is the lead agency facilitating this work.

Blueprint for Safety is leading change to improve the criminal justice system's response to domestic violence.



## WORKING TOGETHER TO HOLD ABUSERS ACCOUNTABLE.

Learn more at [www.capsa.org/blueprint](http://www.capsa.org/blueprint)



## BLUEPRINT FOR SAFETY - SURVIVORS VOICES

A critical part of Blueprint is the survivor's experience. CAPSA holds focus groups with past victims of abuse and has established a survivor advisory group to ensure their experiences are considered as policies are being changed. The goal is to allow the survivors voice to be heard, hold offenders accountable, and keep victims and communities safe in the future.

# FINANCIAL REPORT

## PROGRAM AND OPERATION FUNDING

FY20 Financials are July 1, 2019 - June 30, 2020

Grants	\$1,733,313	71.3%	} <b>LAST YEAR'S COMMUNITY SUPPORT</b> \$577,185
Fundraising / Events	\$197,674	8.1%	
Donations	\$324,517	13.3%	
Somebody's Attic	\$55,000	2.3%	
Misc Income	\$121,488	5.0%	
<b>TOTAL REVENUE</b>	<b>\$2,486,992</b>		

## 100% of your donation **SUPPORTS SURVIVORS**

You can feel good that 100 percent of your gift benefits individuals impacted by domestic violence, stalking, sexual abuse and rape.

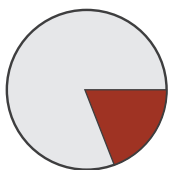
**88 percent of your donation supports core services, while only 12 percent is used for the cost of running CAPSA.**



**\$0.88** of every dollar goes directly to programs

## PROJECTED COMMUNITY SUPPORT NEEDED THIS YEAR

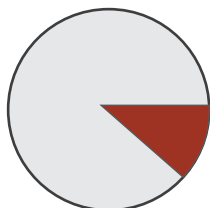
The total operating funds for FY21 is \$3,259,175 and the total community support needed in FY21 is \$559,662.



### HOUSING PROGRAMS

Shelter and Transitional Housing

**PROGRAM COST** - **GRANT FUNDS** = **NEEDED DONATIONS**  
**\$841,923** - **\$614,954** = **\$226,969**



### SUPPORT PROGRAMS

Therapy and Advocacy Services

**PROGRAM COST** - **GRANT FUNDS** = **NEEDED DONATIONS**  
**\$1,442,796** - **\$1,249,159** = **\$193,637**



### PREVENTION EDUCATION

School and Community Education

**PROGRAM COST** - **GRANT FUNDS** = **NEEDED DONATIONS**  
**\$374,456** - **\$235,400** = **\$139,056**

# GIFT OF HOPE



## MAKE HOPE YOUR LEGACY

An endowment fund is a permanent, self-sustaining source of funding. The principal is invested and restricted; so it will perpetually support CAPSA.

This investment then generates dividends, which are used to support CAPSA programs.

**When you donate to an endowment, you provide stability and ensure CAPSA's future financial health.**

Endowments allow organizations to weather storms either from a crisis, like COVID-19, or unanticipated losses such as a loss of a grant. This stability allows organizations to strategically grow to meet the needs of our community.

Learn more at [www.capsa.org/endowment](http://www.capsa.org/endowment)

## PROGRAM ENDOWMENT - FUND FUTURE HELP



CAPSA's programs are well developed and staffed by experts who provide advocacy and support to our clients. These programs are funded largely by competitive grants.

**An endowment allows CAPSA to be more strategic when developing programs and more resilient when funding is lost.**



# CAPSA ENDOWMENT

## TARGETED ENDOWMENTS GOALS



### **PROGRAM FUNDS**

Shore up shelter, therapy, casework and other programs.

**GOAL**  
**\$5,000,000.00**

Learn more about program needs - below.



### **BUILDING FUNDS**

Ensure CAPSA's shelter and outreach office remain a place of refuge.

**GOAL**  
**\$3,000,000.00**

Learn more in the building expansion section. Page 8



### **HOUSING PROGRAM**

Support CAPSA's housing program (direct aid and home maintenance).

**GOAL**  
**\$5,000,000.00**

Learn more in the housing section. Page 13

The five-million-dollar program endowment goal is designed to be flexible to meet the programming needs as they arrive; the approximate goals per program are:

- **Clinical Therapy - \$1,500,000**
- **Casework and Advocacy \$1,500,000**
- **Education & Prevention - \$1,000,000**
- **Emergency Shelter - \$1,000,000**



# EXPANDING OUR OUTREACH BUILDING



## EXPANDING OUTREACH SERVICES

CAPSA is adding an addition to our outreach services building (main office), which will more than double our office space. This addition will support the growth of programs to meet the need of our clients and community.



**CHARIS  
LEGACY**  
FOUNDATION

We are excited to announce The Charis Legacy Foundation has backed this project. We will complete the building this fiscal year.

## FEATURES OF THE BUILDING

**This 4,400 sq. ft. addition creates a single entry for improved security, add clinical therapy offices, community education space, dedicated group rooms, and an administrative space and create a Prevention Education Department area.**

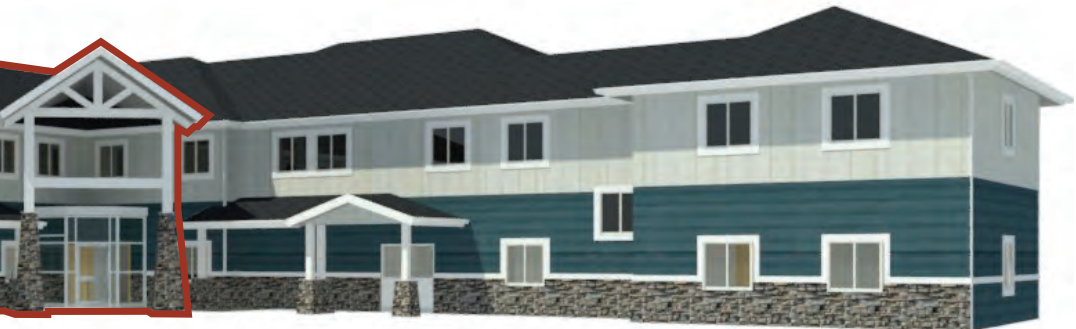
Learn more at [www.capsa.org/building](http://www.capsa.org/building)

## BUILDING ENDOWMENT - FUND THE FUTURE

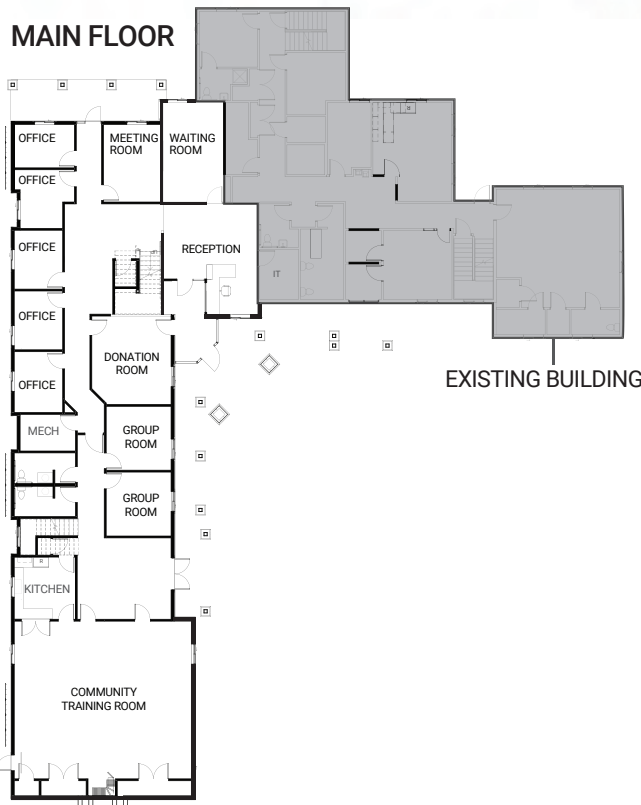
For our clients, CAPSA's outreach offices and shelter are refuges from the storm of abuse. We are seeking support to fund an endowment for the maintenance and operational costs for our campus.

There are significant costs to operate and maintain a building of this size. This is even more significant due to the nature of our business. Our domestic violence shelter houses up to 32 individuals, additional safety systems (security, fire, gates and more) and accessibility features including an elevator.

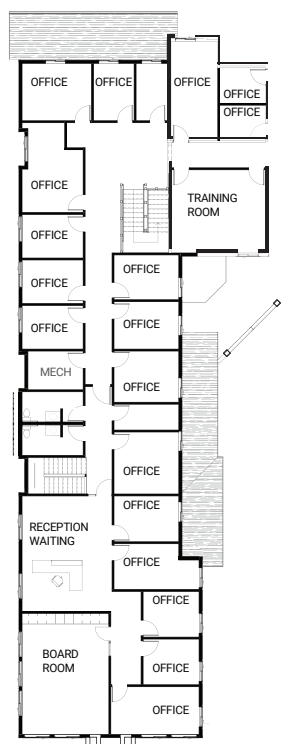
# DOUBLE THE SPACE | DOUBLE THE IMPACT



## MAIN FLOOR



## SECOND FLOOR



Our annual budget for:

<b>MAINTENANCE</b>	<b>\$60,000</b>
<b>UTILITIES</b>	<b>\$30,000</b>
<b>LIABILITY INSURANCE</b>	<b>\$25,000</b>



**TOTAL \$115,000**

For an endowment to cover these expenses, based on a 4 percent distribution rate, the **endowment balance needs to be \$3 million.**

Learn more at [www.capsa.org/endowment](http://www.capsa.org/endowment)



# SOLVING CLIENTS' HOUSING NEEDS



For most of our clients, finding low cost/affordable housing continues to be the most significant barrier to start a life free from abuse.

**CAPSA's Transitional Housing program is a two-year program, which includes housing subsidies coupled with advocacy and educational programming.**

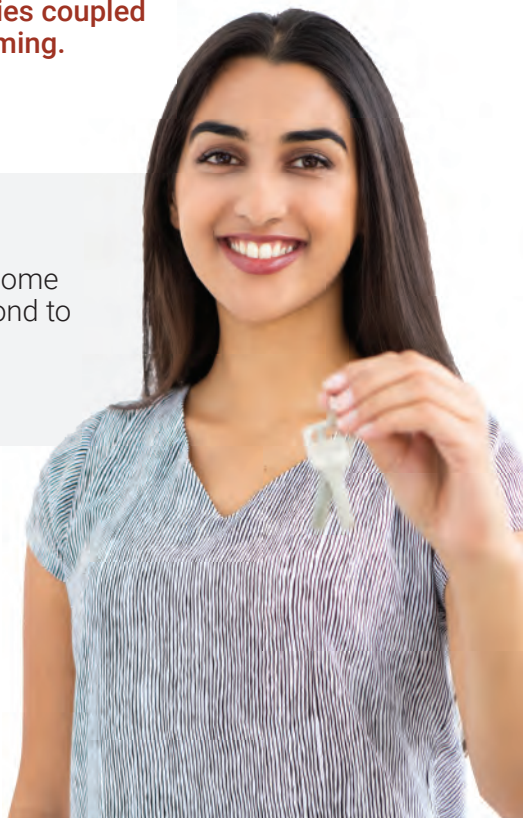
Learn more at [www.capsa.org/housing](http://www.capsa.org/housing)

## INDEPENDENCE PLACE

CAPSA built Independence Place, a nine home neighborhood completed in 2015, to respond to the shortage of affordable housing and to ensure clients who otherwise may not qualify for standard housing.

**CAPSA is leading the state in domestic violence transitional housing programs. Independence Place is the first and only neighborhood in Utah operated and owned by a DV nonprofit** – that is until we complete Independence Way.

Learn more at [www.capsa.org/housing](http://www.capsa.org/housing)



# \$127,878

**HOUSING ASSISTANCE**

Last year, CAPSA provided \$127,878 in housing funds for clients, which include rental assistance, security deposits, moving expenses and more. These are critical funds to support clients and benefit our community, as they pay local landlords and businesses.

# SUPPORTING CAPSA HOUSING



Housing is a key part of helping families escape abuse and heal. **When you become a home sponsor, you become part of the neighborhood** - we put a sign on your home.

## HOME SPONSORSHIP INCLUDES

Home sponsorship is \$6,000 per year - this represents the average cost for CAPSA to provide housing assistance. Sponsorship includes:

- Signage on a CAPSA Home
- Public Recognition - sponsorship at all CAPSA events
- Team building opportunities at your home
- Knowledge you are providing a safe home for a family



## SPONSORSHIP AVAILABLE

With the addition of Independence Way, there are still a number of homes available to sponsor.



Learn more at [www.capsa.org/housing](http://www.capsa.org/housing)

## HOME SPONSORS (AT TIME OF PRINTING)



PAT TERLETZKY & ERIC GESE  
MIKE & RONDA CALLISTER



LORNA WANLASS



MALOUF  
FOUNDATION

# NEW FY21 - INDEPENDENCE WAY



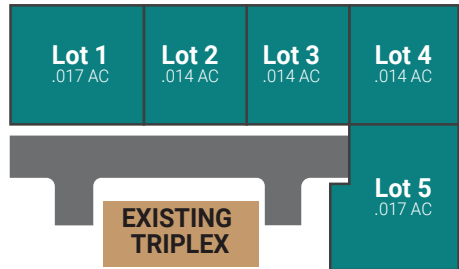
## A SECOND NEIGHBORHOOD

CAPSA identified the need and had the opportunity to purchase an unfinished development, which includes an existing triplex and five building lots. CAPSA purchased this development and began construction of the five homes in the spring of 2020. The neighborhood will be completed in spring of 2021.

**This neighborhood will be called Independence Way and will be CAPSA's second neighborhood.**

With your support, CAPSA continues to meet the housing needs for our clients and leads Utah in our DV transitional housing programs.

Learn more at [www.capsa.org/housing](http://www.capsa.org/housing)



## HOUSING ENDOWMENT - FUND THE FUTURE

**Last year, CAPSA provided \$127,878 in housing related funds** for moving expenses, rental assistance, security deposits and more. These are primarily grant funded and are not guaranteed. If we lose these funds, **without an endowment, we will have to stop providing direct housing assistance.**

## MAINTAINING CAPSA'S HOUSES

By the end of this fiscal year, CAPSA will also manage and maintain 21 units. Rental properties need normal maintenance and turn over requires additional repairs - since CAPSA's housing program is short-term this increases expenses.

# NEW FY20 - UT ROYALS FOURPLEX



The Dell Loy Hansen Family Foundation purchased a fourplex in Logan for CAPSA's exclusive use. The renovation was paid for by the Real Salt Lake Foundation and became available in April 2020.

These homes initially provided short-term shelter during the initial COVID-19 crisis, but now serve as part of CAPSA's transitional housing program.

## 4 ADDITIONAL HOMES



## INDEPENDENCE WAY AND FOURPLEX SUPPORTERS



DELL LOY  
**HANSEN  
FAMILY**  
FOUNDATION



SORENSEN LEGACY FOUNDATION

**MEASOM FAMILY**  
foundation



Olene Walker Housing  
Loan Fund



In FY 21, we are budgeting \$75,000 in maintenance for housing. An endowment will help cover these funds and ensure these homes are safe and in good condition for our clients.

## THE HOUSING ENDOWMENT NEED

For an endowment to cover these expenses and ensure the same level of housing, the endowment needs to generate approximately \$200,000 in housing funds. Based on a 4 percent distribution rate, the **endowment balance needs to be \$5 million.**

Learn more at [www.capsa.org/endowment](http://www.capsa.org/endowment)





## INCREASING AWARENESS AT BUSINESSES

CAPSA's awareness educators present curriculum promoting healthy relationships, reducing risk factors, increasing protective factors and bringing awareness to CAPSA's services. For more than 20 years, CAPSA has been presenting in middle schools and high schools in Cache and Rich Counties.

**Last year, CAPSA hired an educator to focus primarily on developing and presenting to businesses and other social service agencies.** Trainings helps supervisors recognize signs of domestic violence and know what resources are available through CAPSA.

**If your business would like CAPSA to present, please request training at [education@capsa.org](mailto:education@capsa.org).**

More info at [www.capsa.org/education](http://www.capsa.org/education)

Marc heard a CAPSA radio advertisement and called CAPSA to see if we could help. His wife was verbally abusive and threatened to harm herself if he ever left.

**“Until I heard CAPSA's [radio] ad, I felt trapped and afraid. When I called CAPSA, they listened and believed. CAPSA's support made leaving a possibility, but it was them believing me that made it a reality.”**

CAPSA helped Marc find housing and supported him with clinical therapy.





# INCREASED SUPPORT FOR CLIENTS

## THE KNOW CAMPAIGN

CAPSA was awarded two grants from Utah Office for Victims of Crime (UOVC) which provides funding for awareness for sexual assault support service and for awareness for domestic violence support services.

CAPSA developed the KNOW Campaign, which is designed to inform and empower survivors of sexual abuse, rape and domestic violence, by bringing awareness to the issues and breadth of services CAPSA offers. Funding continues during FY21.

These advertisements were placed on social media, print, posters, radio, bus wraps and more.

The central theme of this campaign is:

**WHEN YOU KNOW CAPSA,  
YOU KNOW PEACE  
HELP  
HOPE  
SAFETY  
DIGNITY  
WORTH  
HEALING  
RELIEF**

More info at [www.capsa.org/know](http://www.capsa.org/know)



## CAPSA OFFERING CONTINUING EDUCATION

CAPSA is now offering advocacy training online for professionals seeking CEUs. These trainings are presented and/or approved by CAPSA program and clinical staff. CAPSA is a nonprofit domestic violence, sexual abuse and rape recovery center serving northern Utah. CAPSA's staff are experts on providing trauma-informed support services.

This training has been accredited by the N.A.S.W. Utah Chapter.

Learn more at [www.capsa.org/training](http://www.capsa.org/training)



# WAYS TO SUPPORT CAPSA

We cannot do this work without you and support from people like you. Please consider supporting CAPSA in the following ways:



## DONATE CASH

Your donation will help CAPSA provide lifesaving support services. You can donate online at [www.capsa.org/donate](http://www.capsa.org/donate)

Or by mail at:

CAPSA  
Attn: Donations  
P.O. Box 3617  
Logan, UT 84323-3617

**THANK YOU FROM EVERYONE CAPSA SERVES**



**SOMEBODY'S  
ATTIC**  
— THRIFT BOUTIQUE —

## SUPPORT SOMEBODY'S ATTIC

Somebody's Attic is a local thrift store, with locations in downtown Logan and Smithfield. They raise funds for CAPSA. Last year, Somebody's Attic donated over \$60,000 to CAPSA.

When you donate to and shop at Somebody's Attic, you are supporting CAPSA and those we serve.

Learn more at: [www.somebodysattics.org](http://www.somebodysattics.org)

## PROMOTE OUR MESSAGE

Please follow us on Facebook and Instagram and like, comment on and share our posts. There are people in your network who need CAPSA's support. By sharing our content, you are showing them your support and giving them a valuable resource.

**@CAPSAservices**





# MALOUF FOUNDATION

## CAPSA CANNOT DO THIS WORK WITHOUT MALOUF'S SUPPORT

For more than 10 years, the Malouf Foundation has provided the bedding for CAPSA's shelter. This saves thousands of dollars and ensures that each year more than 300 women, men and children, have a safe and comfortable refuge.

Malouf also donate hundreds of beds, pillows and bedding to clients transitioning into CAPSA's housing program.

Malouf employees are encouraged to donate directly to the CAPSA shelter zero turn-away program through payroll deduction.

Malouf helps raise direct funds for CAPSA programs. The annual Malouf Art for CAPSA event is organized and hosted by Malouf and supports CAPSA's clinical therapy program.

Malouf Foundation has sponsored a home since 2018.

## THANK YOU FOR YOUR SUPPORT OF CAPSA AND THOSE WE SERVE



# **capsa**

**ABUSE ENDS HERE.**

## **FY 21 ANNUAL REPORT**

Report on FY 21  
(July 2019 - June 2020)  
and future plans to serve.

**WWW.CAPSA.ORG**  
**435-753-2500**



The Malouf Foundation covered the printing cost for this publication. Learn more about the Malouf Foundation's support of CAPSA on the back inside cover.

Printed at a discount by:  squareoneprinting